



# VACUUM GENERATOR

## R-781-□



Modular Vacuum Generator

Turn Vacuum on/off

**Features:**

- Micro gap construction - snap action and no blow by

**Performance:**

**3-Way Valve**

**Flow:** 9 scfm @ 100 psig; 255 l/min @ 6.9 bars

**Pilot Pressure Minimum:** 20 psig; 1.4 bars

**Temperature:** 32 to 180°F

**Working Pressure:** 0 to 150 psig; 0 to 10.3 bars

**Vacuum Generator**

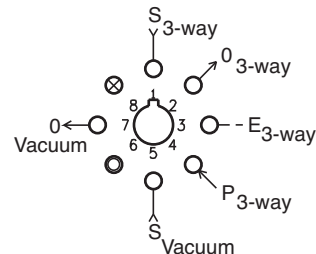
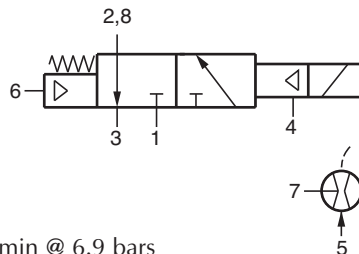
**Vacuum (in. Hg @ 60 psig):** 25

**Vacuum Flow (scfm @ 60 psig):** 0.6

**Air Consumption (scfm @ 60 psig):** 1.7

**Temperature:** 32 to 180°F

**Available Voltage:** 6, 12, 24 VDC



<b>Voltage</b> .....	<u>R-781-6</u>	6 VDC
	<u>R-781-12</u>	12 VDC
	<u>R-781-24</u>	24 VDC

**Power Consumption:** 0.65 W @ rated voltage

**Duty:** Continuous duty to 150% of rated voltage

**Description:**

R-781 is a combination venturi vacuum generator and an independent pilot actuated electronically controlled, spring return, fully ported 3-way valve. Applying pressure at port 5 creates a vacuum at port 7. The 3-way valve can be used to turn the vacuum generator on or off or it can be used to switch the vacuum on or off. To shift the 3-way valve 40 psig is required at port 4 along with the appropriate DC voltage being applied to the solenoid.

## R-782-□



Modular Vacuum Generator

**Features:**

- Micro gap construction - snap action and no blow by

**Performance:**

**3-Way Valve**

**Flow:** 9 scfm @ 100 psig; 255 l/min @ 6.9 bars

**Pilot Pressure Minimum:** 20 psig; 1.4 bars

**Temperature:** 32 to 180°F

**Working Pressure:** 0 to 150 psig; 0 to 10.3 bars

**Vacuum Generator**

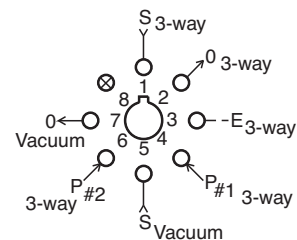
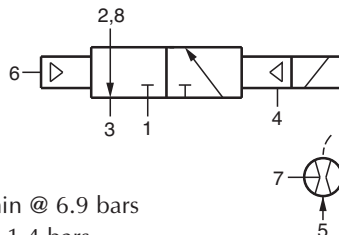
**Vacuum (in. Hg @ 60 psig):** 25

**Vacuum Flow:** 0.6 scfm @ 60 psig

**Air Consumption:** 1.7 scfm @ 60 psig

**Temperature:** 32 to 180°F

**Available Voltage:** 6, 12, 24 VDC



<b>Voltage</b> .....	<u>R-782-6</u>	6 VDC
	<u>R-782-12</u>	12 VDC
	<u>R-782-24</u>	24 VDC

**Power Consumption:** 0.65 W @ rated voltage

**Duty:** Continuous duty to 150% of rated voltage

**Description:**

The R-782 is a combination venturi vacuum generator and an independent pilot actuated electronically controlled, air pilot return, fully ported 3-way valve. Applying pressure at port 5 creates a vacuum at port 7. The 3-way valve can be used to turn the vacuum generator on or off or it can be used to switch the vacuum on or off. To shift the 3-way valve 20 psig is required at port 4 along with the appropriate DC voltage being applied to the solenoid. To return the valve a pilot pressure of 20 psig is required at port 6.